



Equipment Booklet



Climbing	4
CRAG SET - GREEN TRUG	4
ABSEIL SET - BLACK TRUG	5
ABSEIL EXTRAS	5
HARNESS SET	6
HELMET SET - YELLOW/BLUE BAG	6
Caving	7
BAG 1 + LANYARD & STEEL KRAB	7
BAG 2 + LANYARD & STEEL KRAB	7
BAG 3 + LANYARD & STEEL KRAB	7
CAVE HELMET SETS - ORANGE TRUG	8
Walking boot maintenance	8
Paddling	9
RAFTING SET - IN BLUE TRUG	9
BARREL SET	9
Canoe Bushcraft	10
KELLY KETTLE SETS	10
FIRE STARTER KIT	10
HOT CHOCOLATE	10
Ghyll / Gorge Scrambling & Canyoning	11
DRY GHYLL BAG	11
OPTIONAL EXTRAS	11
WET GHYLL BAG	11
Expedition	12
TRANGIA SET	12
DINNER SET	12
WASH UP SET	12
Bushcraft	13
SHARPS SET	13
GLOVES	13
SIZE CHART	14
Clothing	14
HANGER LOGIC	14

Kit Stores Layout	15
End of week checks	16
Kelley Kettle sets	16
Hot Choc sets	16
Rafting set	16
Minibus Equipment - RA- HN10, CX63	17
Driver Side door Pocket	17
Driver Dash Box	17
Gear Stick	17
Passenger Dash Box	18
Glove Box	18
Passenger Door Pocket	18
Multi-surface cleaner	18
Window scraper /sponge	18
2x high viz vests	18
Sick bucket kit - black Petzl 15l bucket bag	19
Back of cab seats	19
Behind back door	20
Minibuses - None RA	21
Sick bucket kit - black Petzl 15l bucket bag x4	21
Trailer Kit - Red Bag x2	21
END	22

Climbing

CRAG SET - GREEN TRUG



4 x TORQUES (HEX) + COLOURED BOA
 3 x BUG + OVAL
 6 x STEEL OVALS
 2 x HMS BOA KRAB
 1 x FIGURE 8 + SCREWGATE
 10 x SCREWGATES
 2 x 120 SLING + AERO KRAB
 1 x 240 SLING + EDELRID KRAB
 11 x NUTS + 1 WIREGATE
 1 x NUT BUSTER
 1 x PRUSSIK/GEAR LOOP

2 x 30M DYNAMIC
 3 x CHALK BAGS
 2 x 30M LOW STRETCH
 1 x 60M DYNAMIC
 2 x ROPE PROTECTOR
 2 x YELLOW BAGS

ABSEIL SET - BLACK TRUG



- 1 x 60M LOW STRETCH (red safety rope)
- 1 x 60M LOW STRETCH
- 1 x 30M LOW STRETCH
- 2 x BLACK BAGS
- 2 x 120 SLING + AERO KRAB
- 1 x 240 SLING + EDELRID KRAB
- 5 x SCREWGATES
- 2 x HMS BOA KRAB
- 4 x FIGURE 8 + KRAB

ABSEIL EXTRAS

- 4 x CHEST HARNESSES
- 4 x PAIRS OF GLOVES



HARNESS SET

- 12 x HARNESS
- 1 x XL HARNESS (red belay loop)
- 1 x GREEN BAG



HELMET SET - YELLOW/BLUE BAG

- 12 x PANGA
- 1 x ALVEO VENT



Caving

BAG 1 + LANYARD & STEEL KRAB

- 1 x FIRST AID KIT
- 1 x GROUP SHELTER
- 1 x CARRY MAT



BAG 2 + LANYARD & STEEL KRAB

- 1 x KEG + SPARE BATTERIES
- 4 x KNEE PADS
- 1 x CARRY MAT
- 12 x BELTS on 1 x XL BLUE BELT

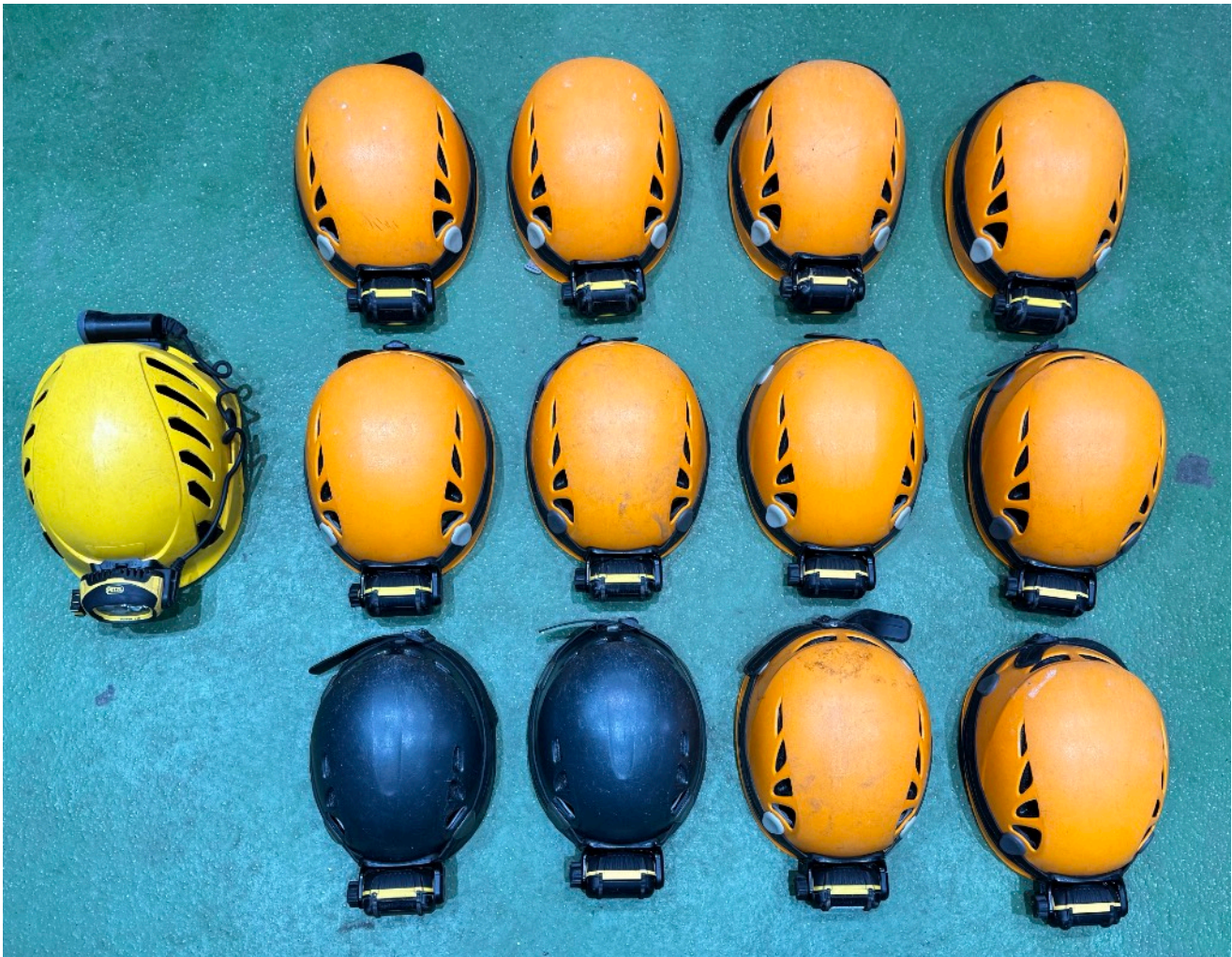


BAG 3 + LANYARD & STEEL KRAB

- 1 x 30M LOW STRETCH
- 2 x BOAS



CAVE HELMET SETS - ORANGE TRUG



2 x ELIOS TYPE 1
10 x ELIOS TYPE 2
1 x ALVEO VENT
ALTERNATIVE SIZES AVAILABLE

Walking boot maintenance

4 x brushes for mud (not wax)
4 x rags
2 x doubin
2 x spray for sued boots



Padding

RAFTING SET - IN BLUE TRUG

- 8 x RAFTING ROPES
- 4 x BAILERS
- 1 x THROWLINE + KRAB
- 2 x PADDLE SAILS
- 1 x KEG



BARREL SET

- 1 x LARGE BARREL
- 1 x SMALL BARREL
- 1 x LARGE DRY BAG



Canoe Bushcraft

KELLY KETTLE SETS

In Small Blue Barrel

- 1 x KELLY KETTLE
- 1 x GROUP START KIT
- 1 x BIN BAG
- 1 x AXE
- 1 x PAIR OF GLOVES
- 1 x BURNS KIT
- 2 x WATERBOTTLES
- KINDLING



FIRE STARTER KIT

- 1 x BOX OF MATCHES
- 1 x VASELINE
- 1 x KNIFE
- 2 X FLINT & STEEL
- COTTON WOOL



HOT CHOCOLATE

- 12 x MUGS
- 1 x SPOON
- 1 x HOT CHOCOLATE



Ghyll / Gorge Scrambling & Canyoning

DRY GHYLL BAG

- 1 x RED/BLUE BAG
- 2 x HMS BOAS
- 13 x SCREWGATES
- 1 x 120 SLING + SCREWGATE
- 1 x FIRST AID KIT
- 1 x GROUP SHELTER
- 1 x 30M DYNAMIC



OPTIONAL EXTRAS

- 1 X PROTRAXION + OVAL + SENTINAL
- 1 X 30M LOW STRETCH

WET GHYLL BAG

- 1 x PETZL TRANSPORT 45L
- 2 x HMS BOA KRAB
- 1 x 120 SLING + AERO KRAB
- 1 x FIRST AID KIT
- 1 x GROUP SHELTER
- 1 x 30M CANYON ROPE



Expedition

TRANGIA SET

- 5 x TRANGIA
- 1 x KETTLE
- 1 x BURNS KIT
- 1 x LIGHTER
- 6 x GAS
- 1 x BLACK BAG



DINNER SET

- 13 x MUGS
- 13 x PLATES
- 13 x SPORKS
- 13 x BOWLS



WASH UP SET

- 3 x ORANGE TRUG
- 3 x BLACK TRUG
- 6 x NON SCRATCH SPONGE FOR PLASTICS
- 2 x PACK BRILLO PAD's FOR TRANGIA's
- 6 x GREEN MICROFIBRE CLOTHS
- 6 x TEA TOWELS
- 1 x WASHING UP LIQUID



Bushcraft

SHARPS SET

IN CLEAR BOX

10 x PEELERS
14 x KNIVES



GLOVES

8 x SMALL
10 x MEDIUM
12 x LARGE
6 x EXTRA LARGE



SIZE CHART

REAL ADVENTURE		Water Proofs		Caving		Jumpers	Water Sports		
		Trousers	Jackets	Undersuit	Oversuit		Wet Suits		Caggs
		Red Hanger	Green Hanger	Black Hanger	Black Hanger	Black Hanger	Palm	Crewsaver	Blue Hanger
6 Years							6 Years		
							4XS	Child	
8 Years							8 Years		
							3XS	Junior	
10 Years							10 Years		
							XXS		XXS
XS							XS		XS
							XS		
S							S	S	S
M							M		M
L							L		L
XL							XL		XL
XXL							XXL		XXL

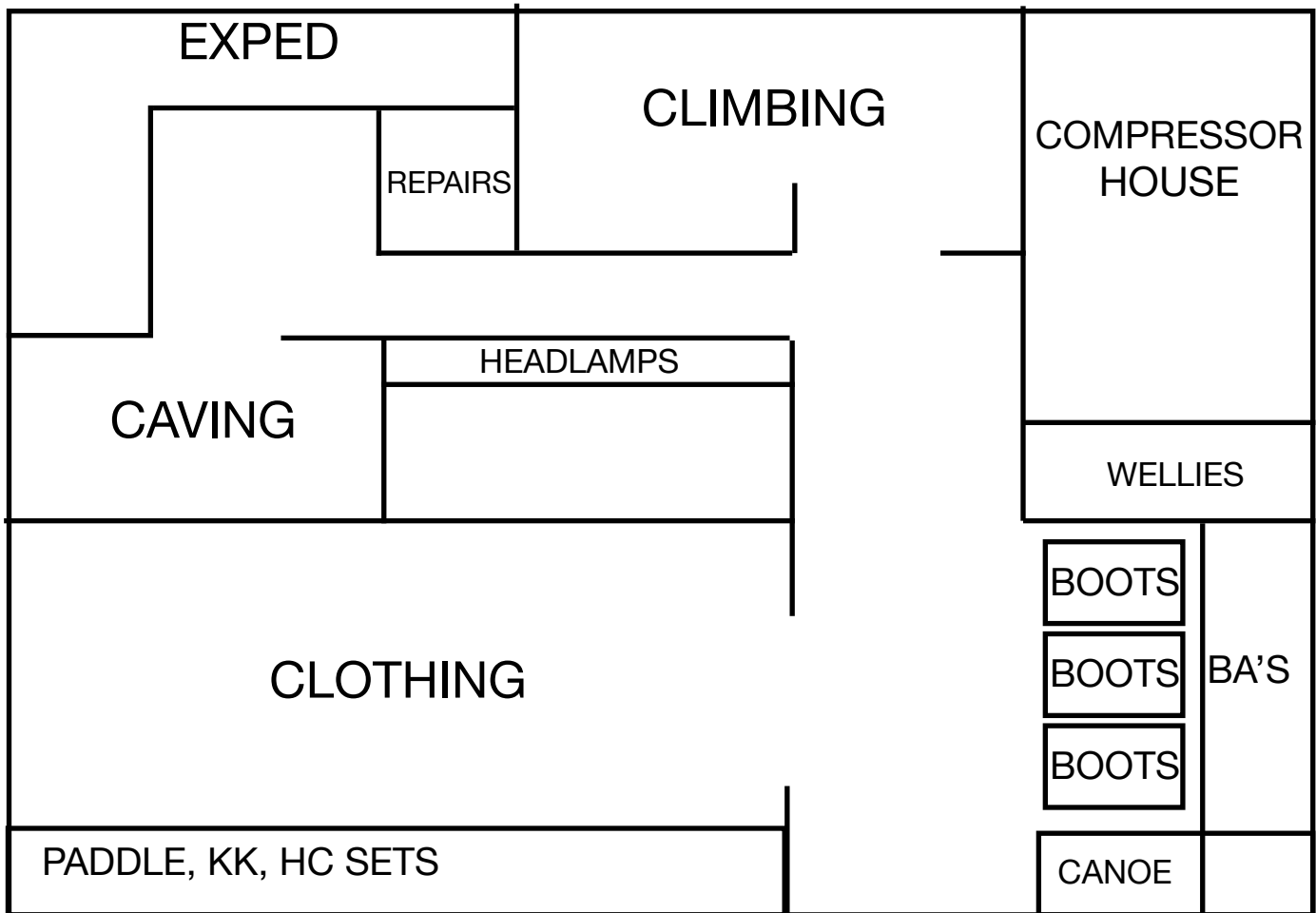
Clothing

HANGER LOGIC

Keep hangers in kit van / trailer at entrance once item is handed out
 Do not leave hangers in-between layers hanging
 Report broken hangers and request replacement

- Waterproof Trousers - **RED** HANGER
- Waterproof Jacket - **GREEN** HANGER
- Caving Undersuit - **BLACK** HANGER
- Caving Overshuit - **BLACK** HANGER
- Fleece Jumper - **BLACK** HANGER
- Wetsuit - **BLUE** HANGER
- Cag - **BLUE** HANGER

Kit Stores Layout



End of week checks

These are a few vitals that seem to get missed on occasions.

Kelley Kettle sets

- empty water and leave lid off (pack at top)
- replenish cotton wool
- Check vaseline
- Restock kindling
- Switch out bin bags if needed

Hot Choc sets

- Check they are clean
- replenish hot choc (remove at end of season)

Rafting set

- Check sails are dry
- Check / dry Throwline
- All tat is there
- Empty keg

Minibus Equipment - RA- HN10, CX63

Driver Side door Pocket

- Vehicle Log - black folder
- Taco instructions
- Lock Box



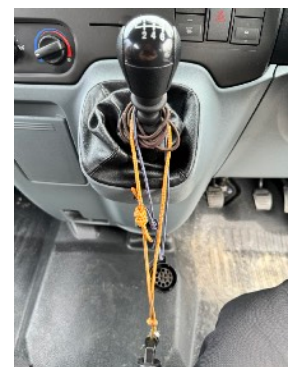
Driver Dash Box

- Spare taco rolls for use in vehicle
- Phone cables and audio adapter for stereo (USB-C and Lightning)
- Vehicle Tracker - (Air Tag)



Gear Stick

- RA Key Set on string
- 7pin to 13 pin converter



Passenger Dash Box

Gafa Tape - mini role
 Figure tape
 Location of Aux-in for radio



Glove Box

Wheel Nut impact sockets
 Spare bulb kit
 Spare fuse kit
 Pliers for fuse removal
 Parking arrival time card
 Emergency action card
 Tyre pressure gauge



Tacho Reels - **DVSA inspector use only**
 - do not use

Passenger Door Pocket

1/2 breaker bar for sockets
 Hand sanitiser
 Multi-surface cleaner
 J Cloths
 Pocket Tissues
 Window sponge
 Window scraper /sponge
 2x high viz vests
 2 x bin bags
 Brush



Sick bucket kit - black Petzl 15l bucket bag

2x Venal Gloves
2x bin bags
Wipes
Cloth
2x sick buckets lined ready to go
Packet of sick bags
Hand towels - paper



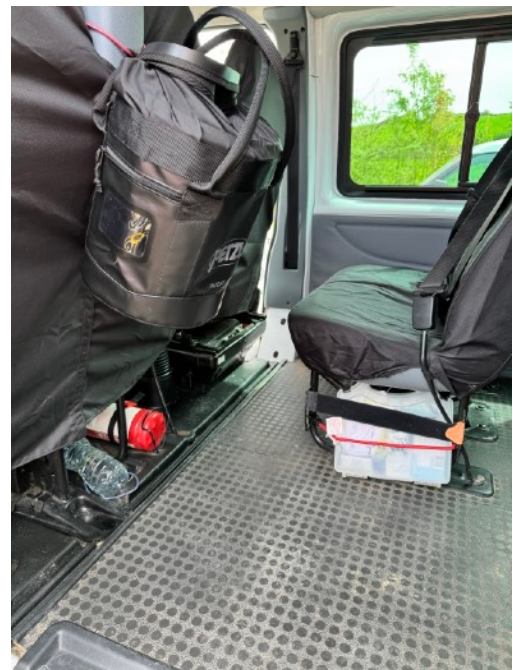
Back of cab seats

Sick bucket kit - black Petzl 15l bucket bag

First Aid Kit - strapped to side of second row of seats

Fire extinguisher between seats

1.5l None-potable water for washing use



IF vehicle first aid kit is used please note items used in daily defect log and report via txt / email to RA HQ / Staff@ and attempt to replace at earliest convenience. This is to stay compliant with DVSA.

Behind back door

Number plate

Spare clothes bag

5 litres of **drinking water** - potable



Please refresh potable water daily

Minibuses - None RA

Not under Real Adventure Operators licence but used on courses.

Sick bucket kit - black Petzl 15l bucket bag x4

- 2x Venal Gloves
- 2x bin bags
- Wipes
- Cloth
- 2x sick buckets lined ready to go
- Packet of sick bags
- Hand towels - paper



Minibus Vitals Bag - Blue Bag x4

- 2 x High Vis
- Key lock box
- 1.5l water bottle - none potable
- J Cloths
- Gafa tap - mini roll
- Hand sanitiser
- Anti bacterial spray
- Window scraper sponge
- Window sponge
- 2x bin bags



Trailer Kit - Red Bag x2

- Impact socket set
- 1/2 breaker bar for sockets
- RA key set
- Blank number plate
- Sharpie - thick
- Meths bottle
- Rag



END